



(shown above is one attached to a pallet-these instructions are for a house with feet instead)

DOGHOUSE WITH FEET 35X24X24

DIRECTIONS FOR 10 AT A TIME

Supplies you'll need...

10: sheet plywood, 1/2" minimum exterior grade, plus an extra piece 35 x 32 for top of shade porch

20: 8' 2x4's

25: 8' 2x2's

No. 8 wood screws, 1.5 inches long

paintable caulking

paint or non-toxic stain

Cutting Instructions:

Cut the 2x4's as follows:

10: 2@ 27" (20 pieces) and 1@ 14" (10 pieces)

10: 2@ 27" (20 pieces) and 1@11" (10 pieces)

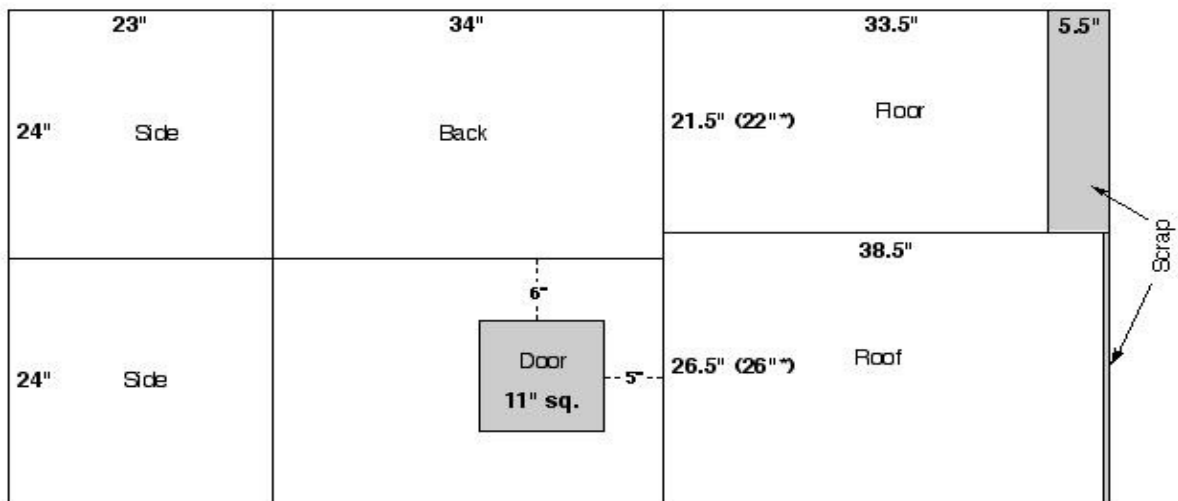
(You should have 40 27" pieces and 10@ 11" & 14")

Cut the 2x2's as follows:

20: 1@ 38.5", 27" & 19". (20 pieces each)

5: 4@ 23.5" (20 pieces)

Plywood Schematic



* If you use these dimensions, make sure doghouse width is no more than 23", preferably a shade less, and make roof rim stick out a fraction of an inch.

ASSEMBLY

Screw two of the 2x4 onto the front panel, where the door goes, then screw the other two onto the back panel.

Use 2@ 14" and 2@ 11" 2x4's to make the chin rest/rain visor, which the dogs love: screw together to form a frame then attach around the edge of the doorway. Next attach the side panels to the front and back to create a box.



Screw the 19" and the 27" 2x2's around the base to support the loose floor board. (You have to cut corner notches in the floor board so it fits inside the house, which will become obvious).



Screw the 38.5" and 23.5" 2x2's around the edge of the roof board to make a rim.

Caulk between the 2x2's and roof to retard rain seepage. Caulk all exposed seams.

Then paint or stain entire house. Painted houses last 4 times longer than unpainted. If you choose stain, make certain it is non-toxic for your chewers:-)

